

# **Defence Diplomacy and the Civil-Military Relationship**

**Dr. Myszka Gużkowska**

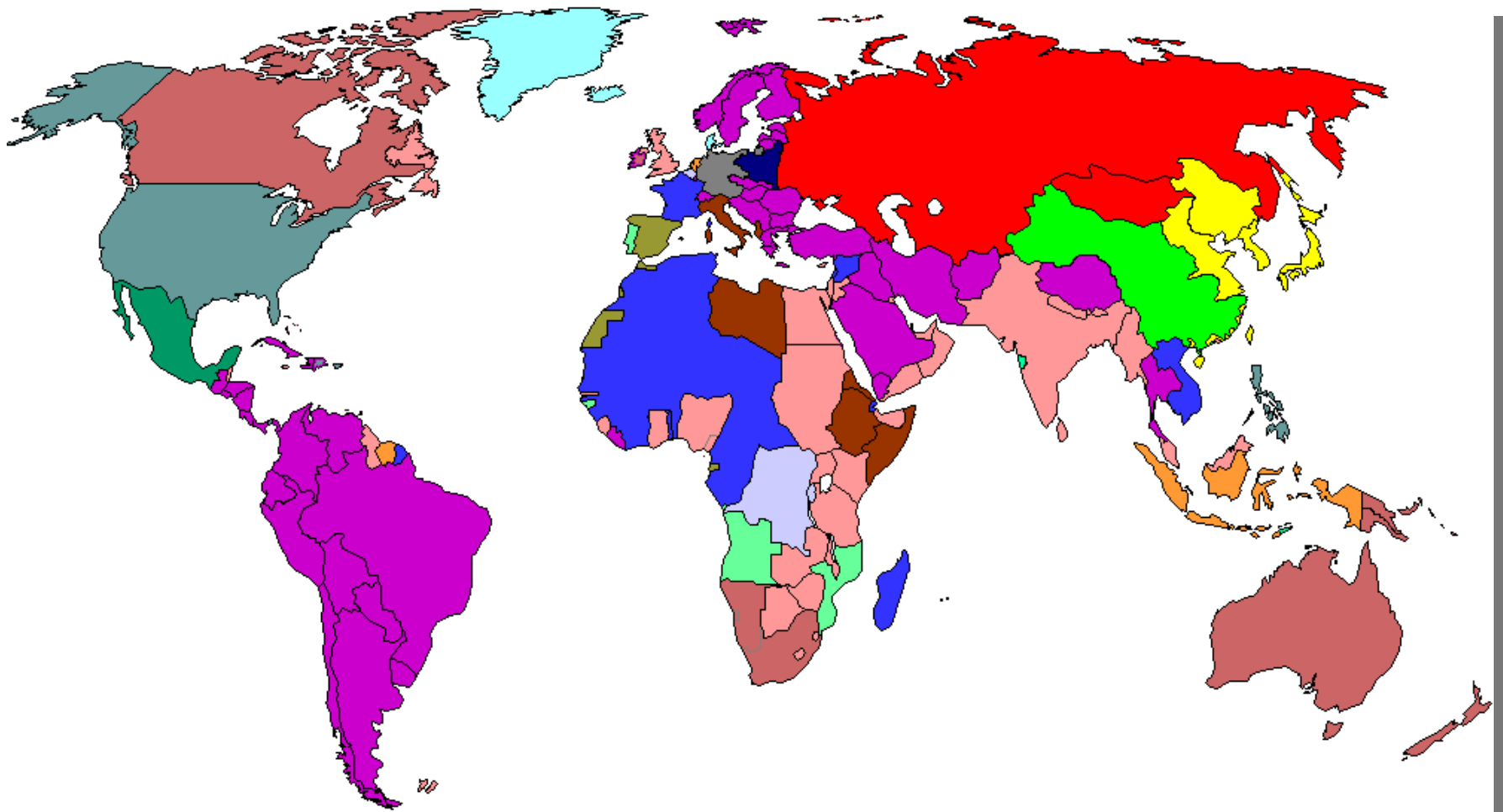
# Overview

- Changes in Conflict & Security 1918-2018
- 3 Examples of Civil Military Relationships
- Conclusions
- Look Forward



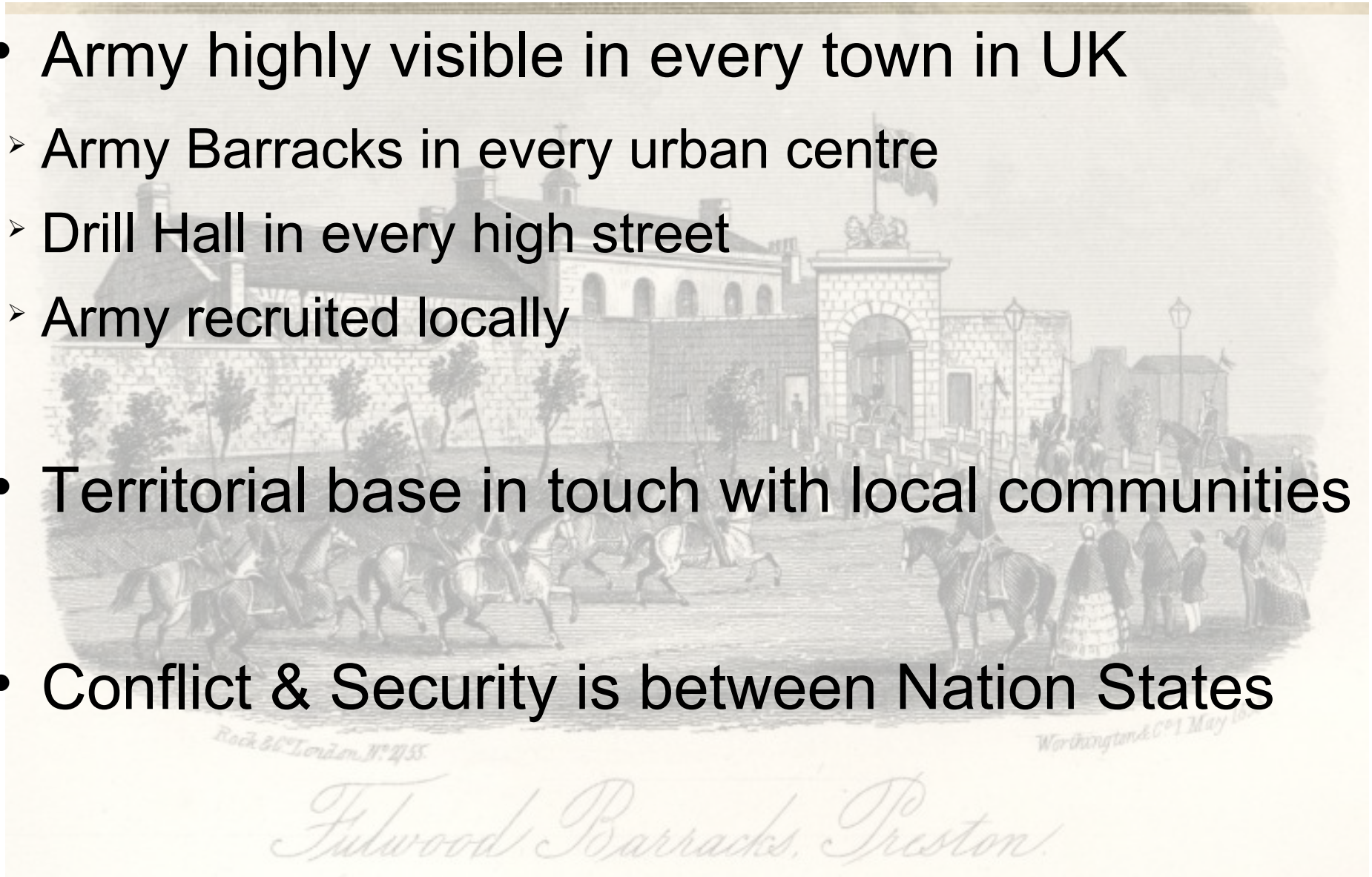
# Conflict & Security - 1918-2018

Pre-1945 : Nation States



# Pre-1945 : Nation States

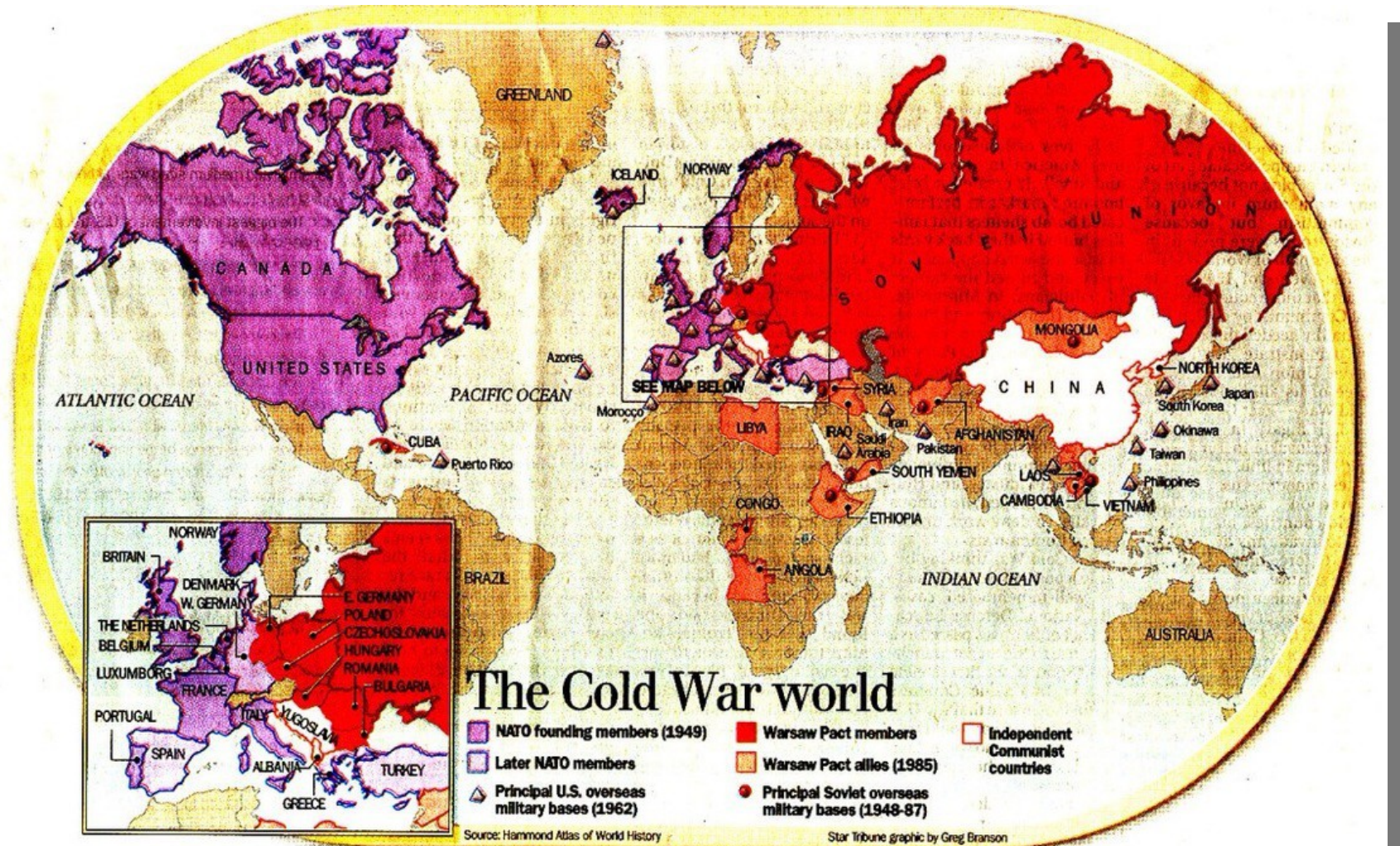
- Army highly visible in every town in UK
  - Army Barracks in every urban centre
  - Drill Hall in every high street
  - Army recruited locally
- Territorial base in touch with local communities
- Conflict & Security is between Nation States





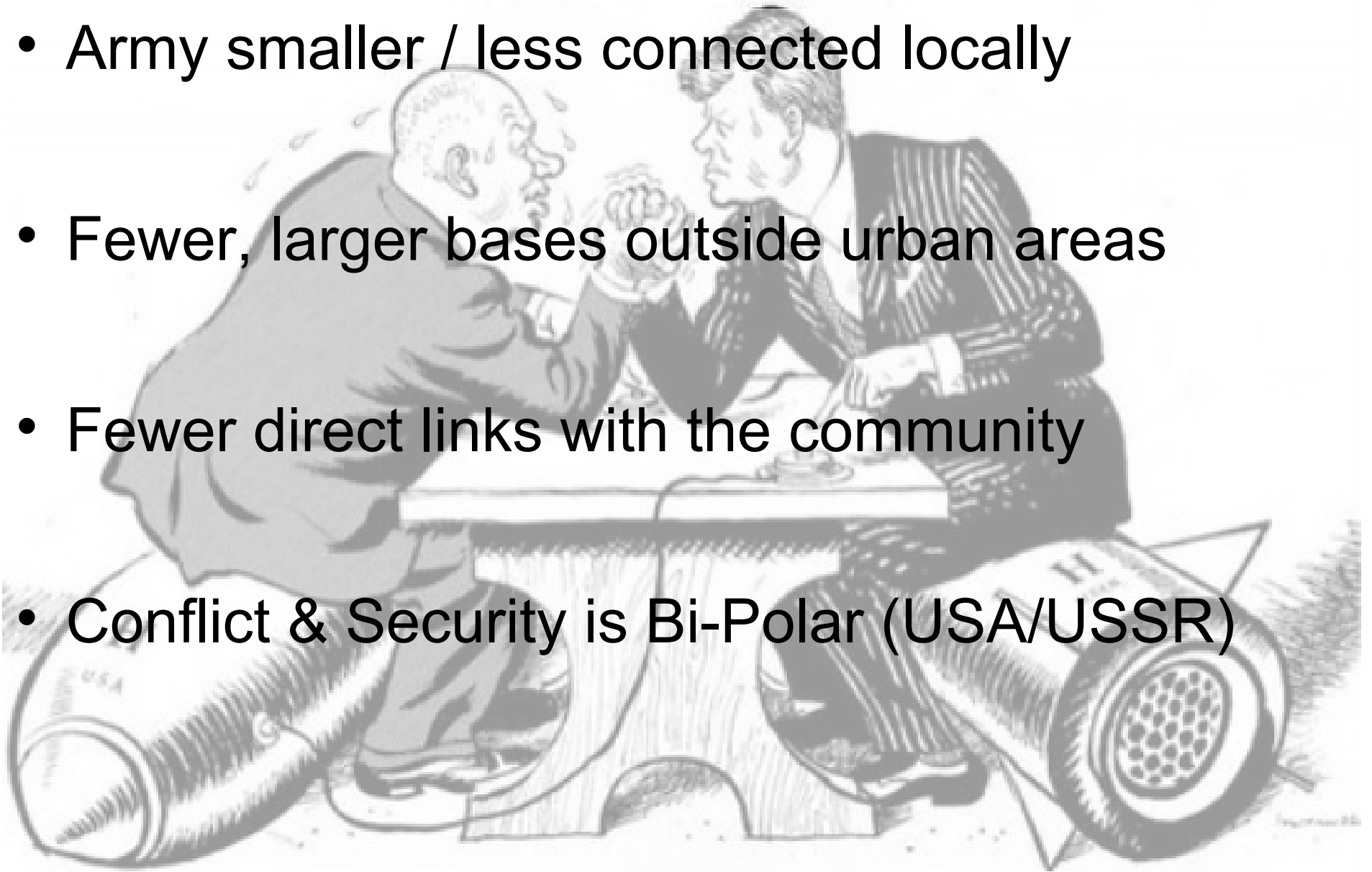
# Conflict & Security - 1918-2018

## Cold War (mid-1950s) : Bi-Polar Power Blocs



# Cold War (mid-1950s) - Bi-polar

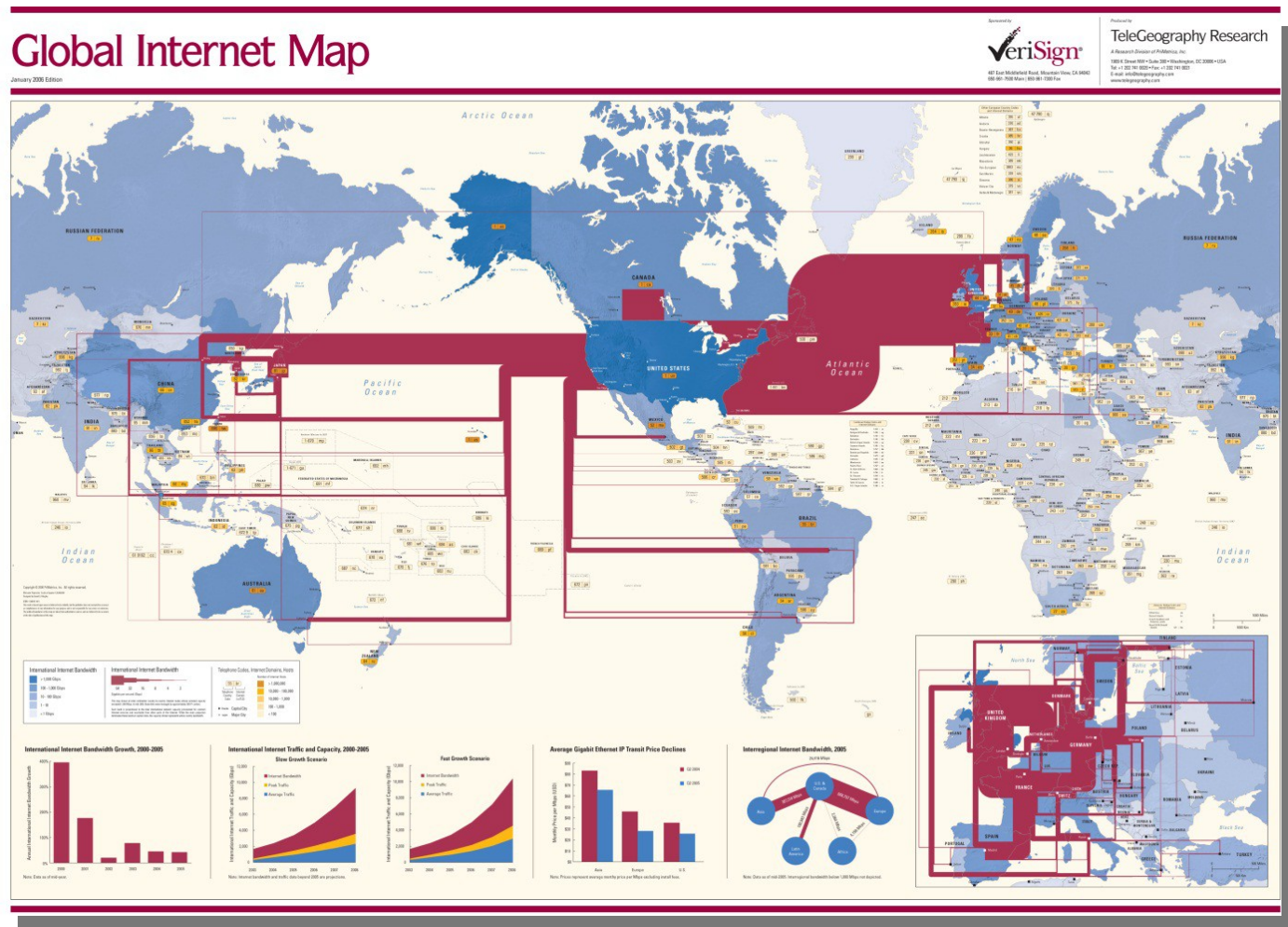
- Army smaller / less connected locally
- Fewer, larger bases outside urban areas
- Fewer direct links with the community
- Conflict & Security is Bi-Polar (USA/USSR)





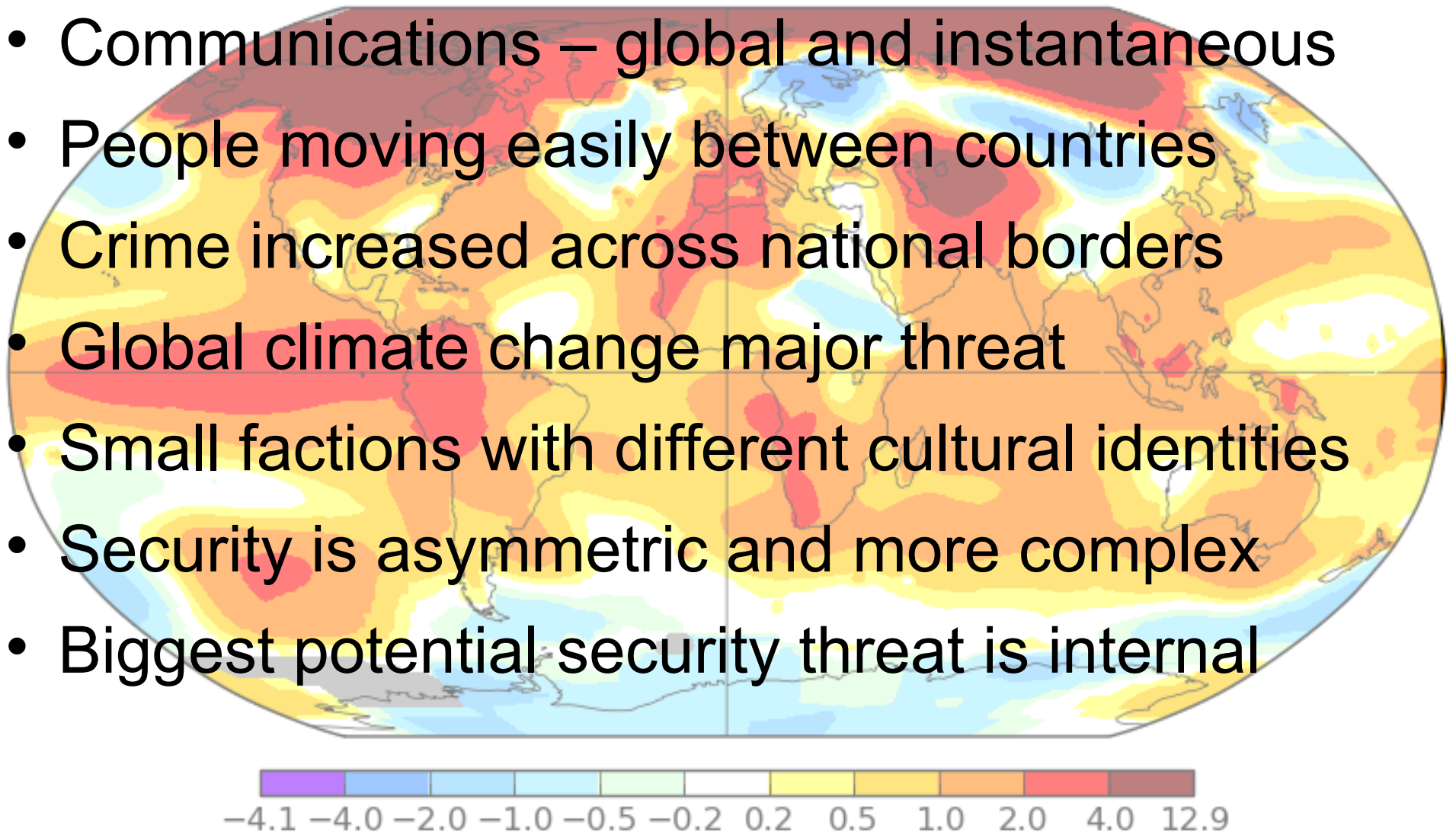
# Conflict & Security - 1918-2018

## Post-1990 – present: Globalisation Era



# Post – 1990s : Globalisation Era

- Communications – global and instantaneous
- People moving easily between countries
- Crime increased across national borders
- Global climate change major threat
- Small factions with different cultural identities
- Security is asymmetric and more complex
- Biggest potential security threat is internal

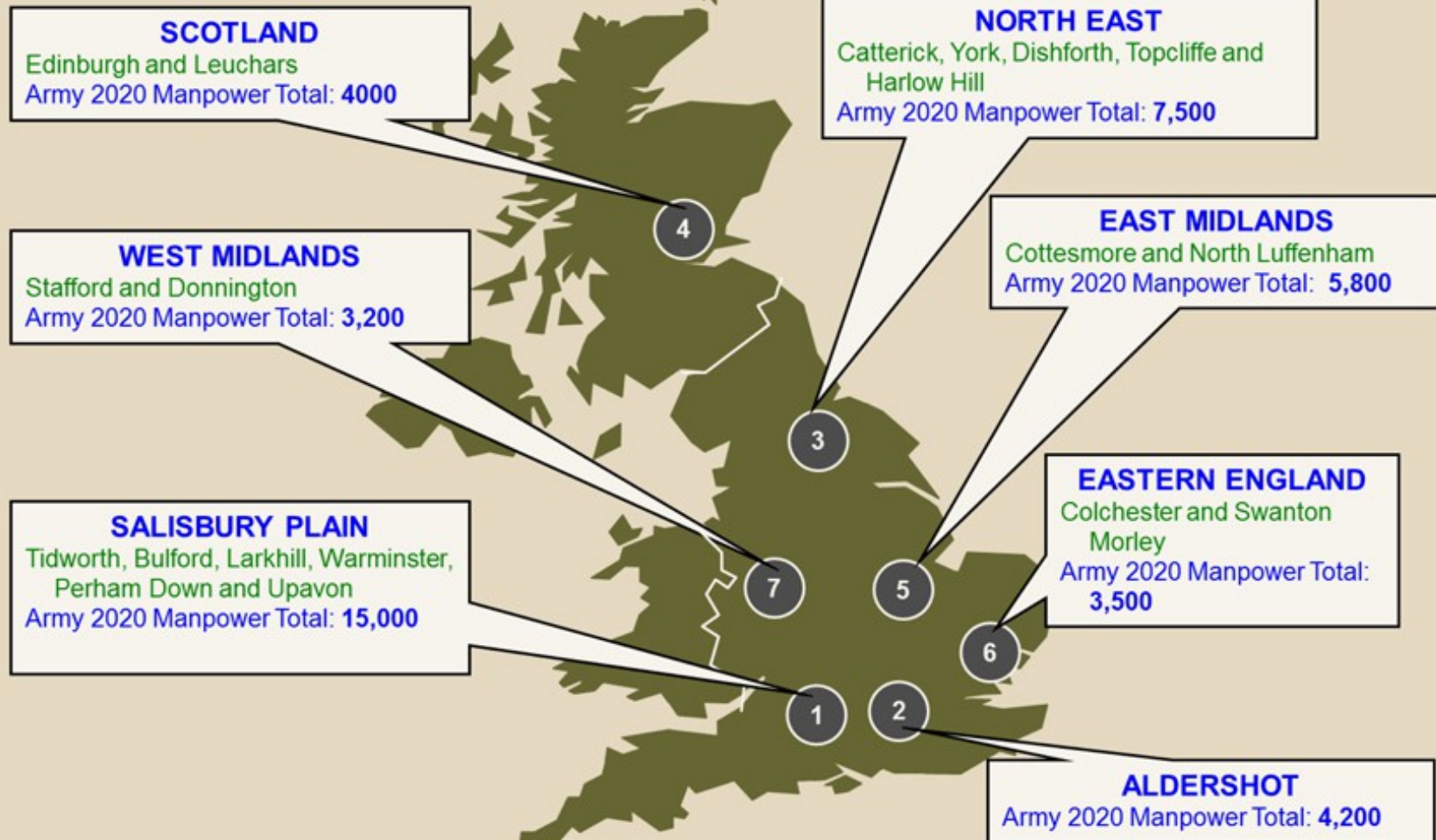




# A Century of Change



## Major Army Sites



# Armies face new challenges

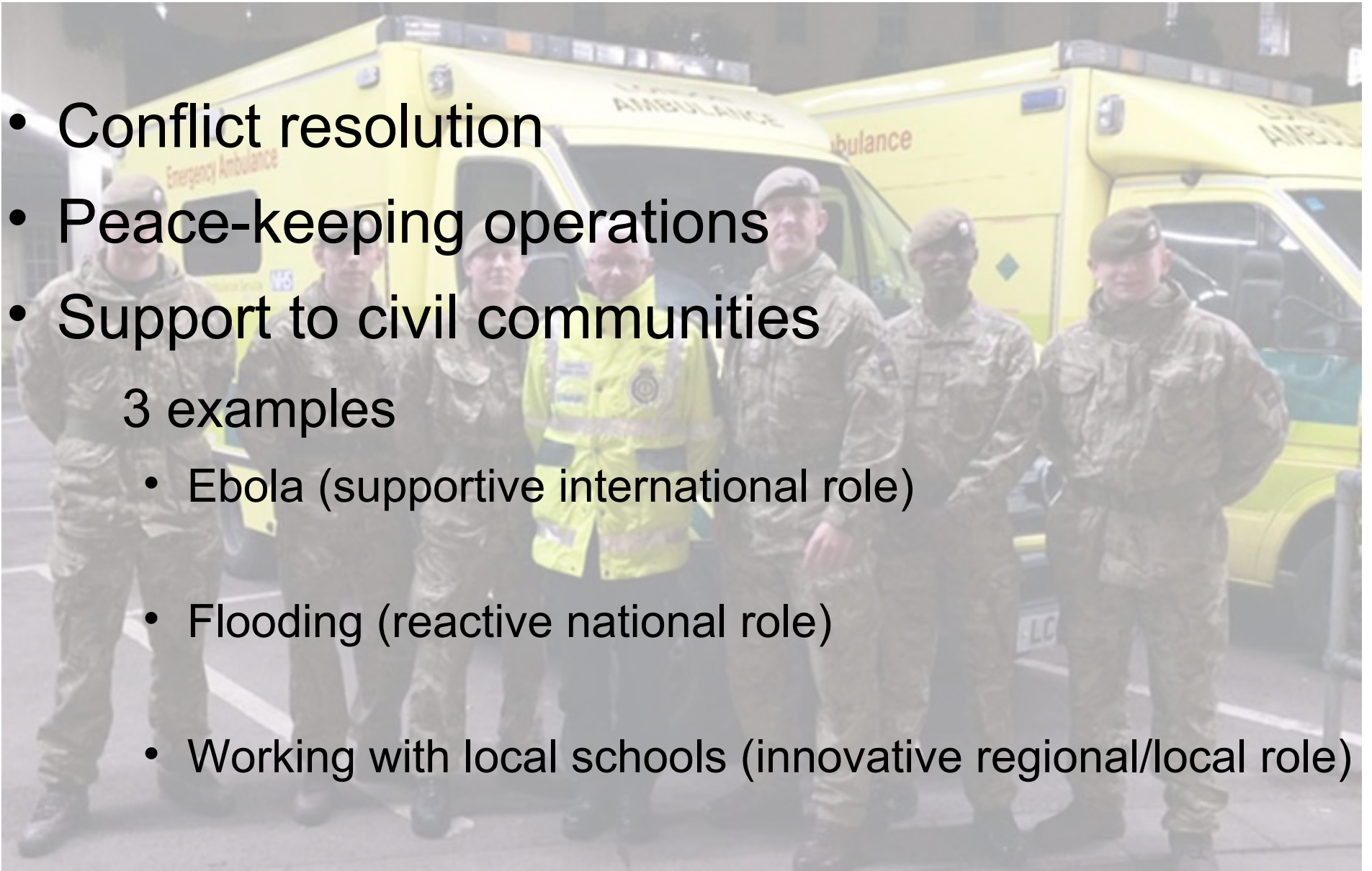
- European Armies are:
  - Smaller
  - Losing touch with society which is increasingly diverse
- Need to make a conscious/deliberate effort to engage with civil society to :
  - Understand potential threats
  - To avoid / manage conflict
  - To support government, society and local communities

# Civil - Military Relationship

- Conflict resolution
- Peace-keeping operations
- Support to civil communities

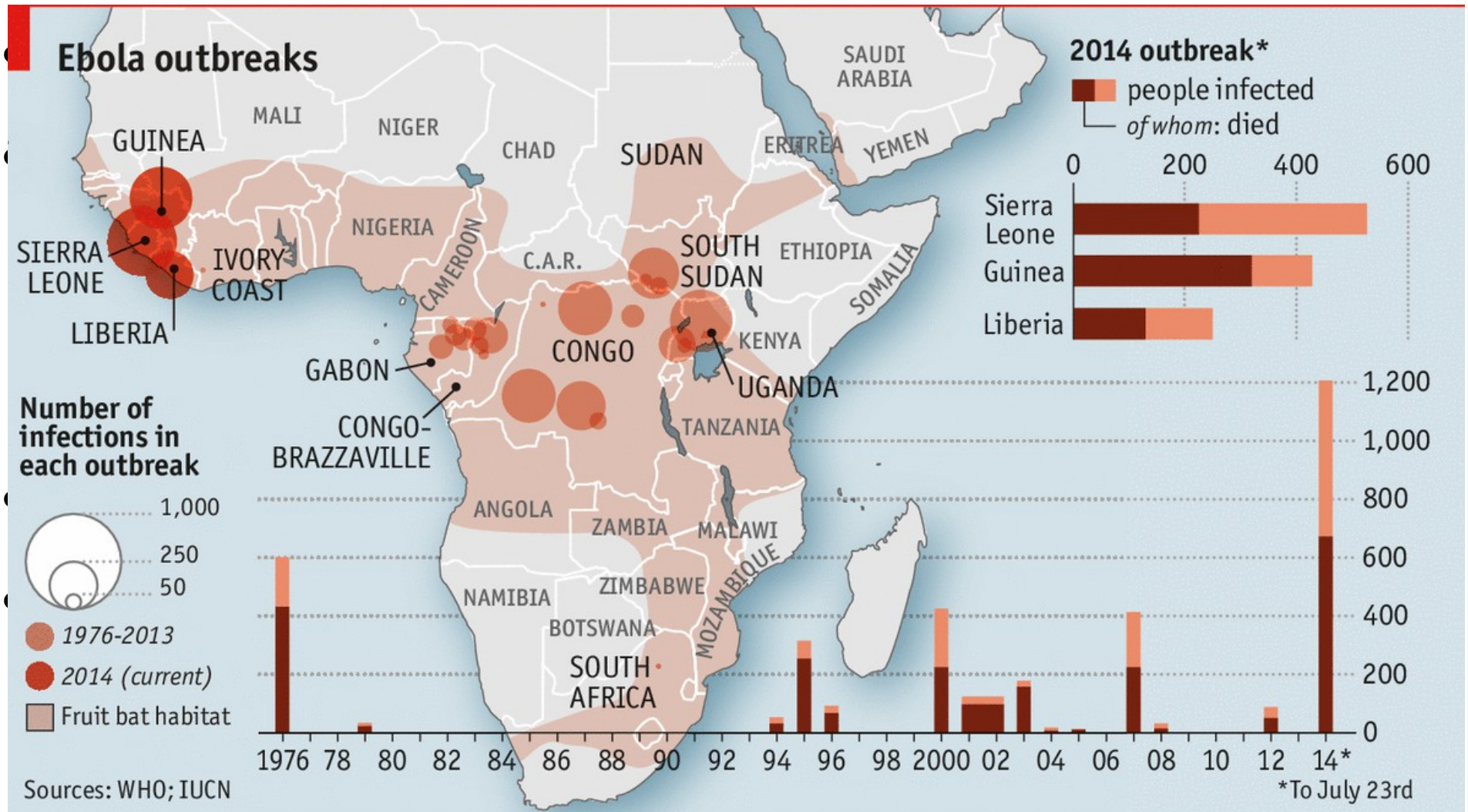
## 3 examples

- Ebola (supportive international role)
- Flooding (reactive national role)
- Working with local schools (innovative regional/local role)



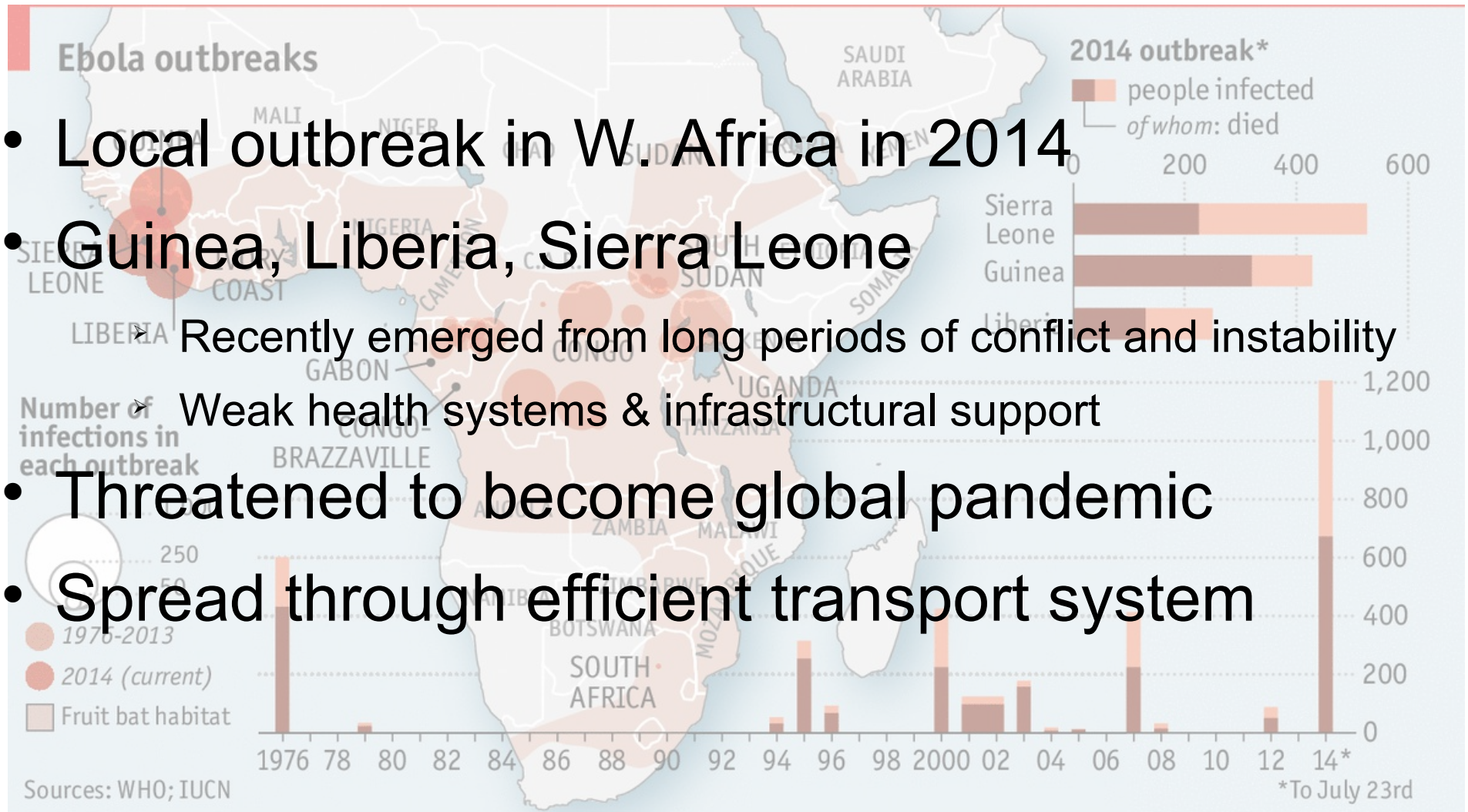


# 1. Ebola (supportive international role)



# 1. Ebola (supportive international role)

- Local outbreak in W. Africa in 2014
- Guinea, Liberia, Sierra Leone
  - Recently emerged from long periods of conflict and instability
  - Weak health systems & infrastructural support
- Threatened to become global pandemic
- Spread through efficient transport system



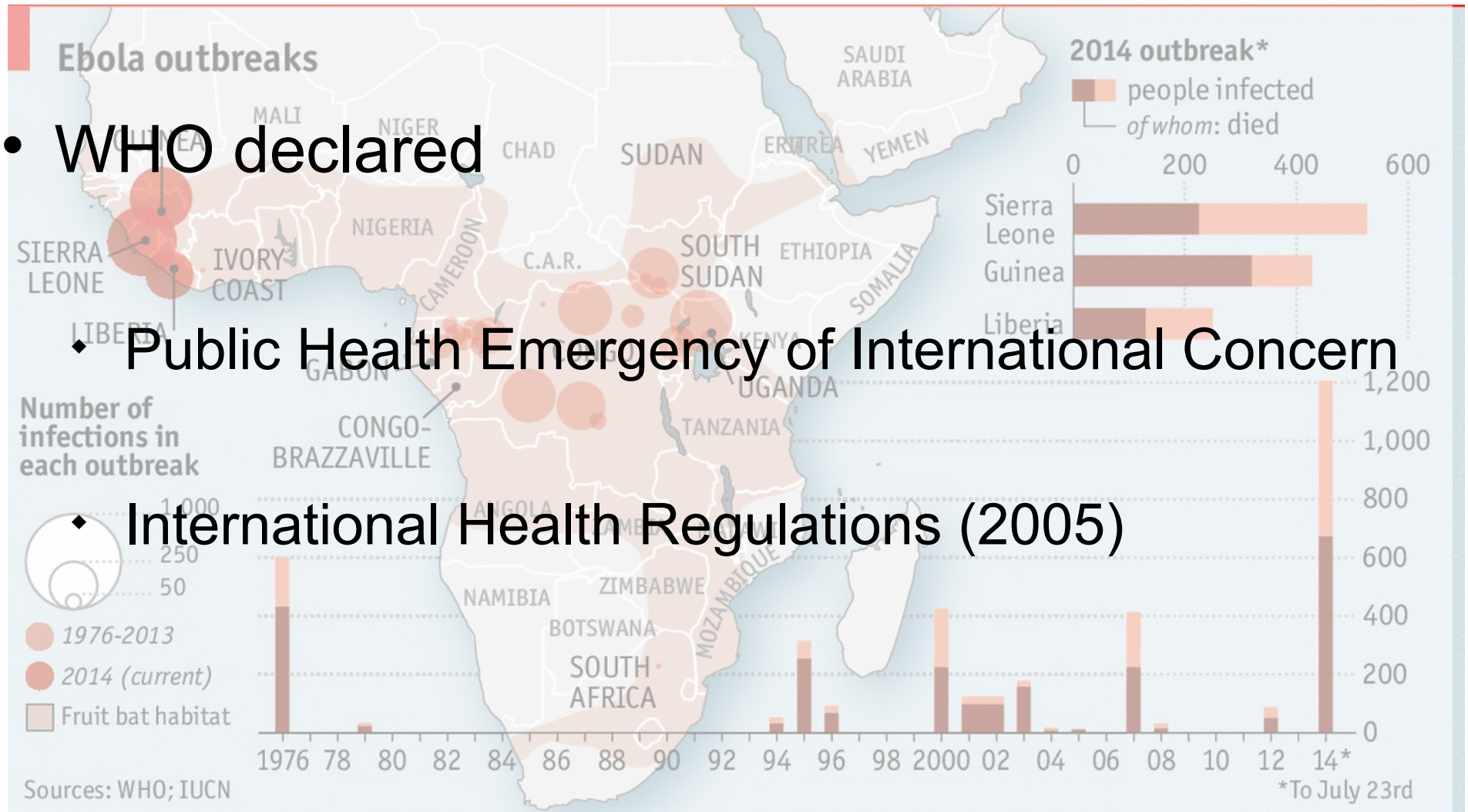


# Ebola - WHO Action

- WHO declared

- ♦ Public Health Emergency of International Concern

- ♦ International Health Regulations (2005)

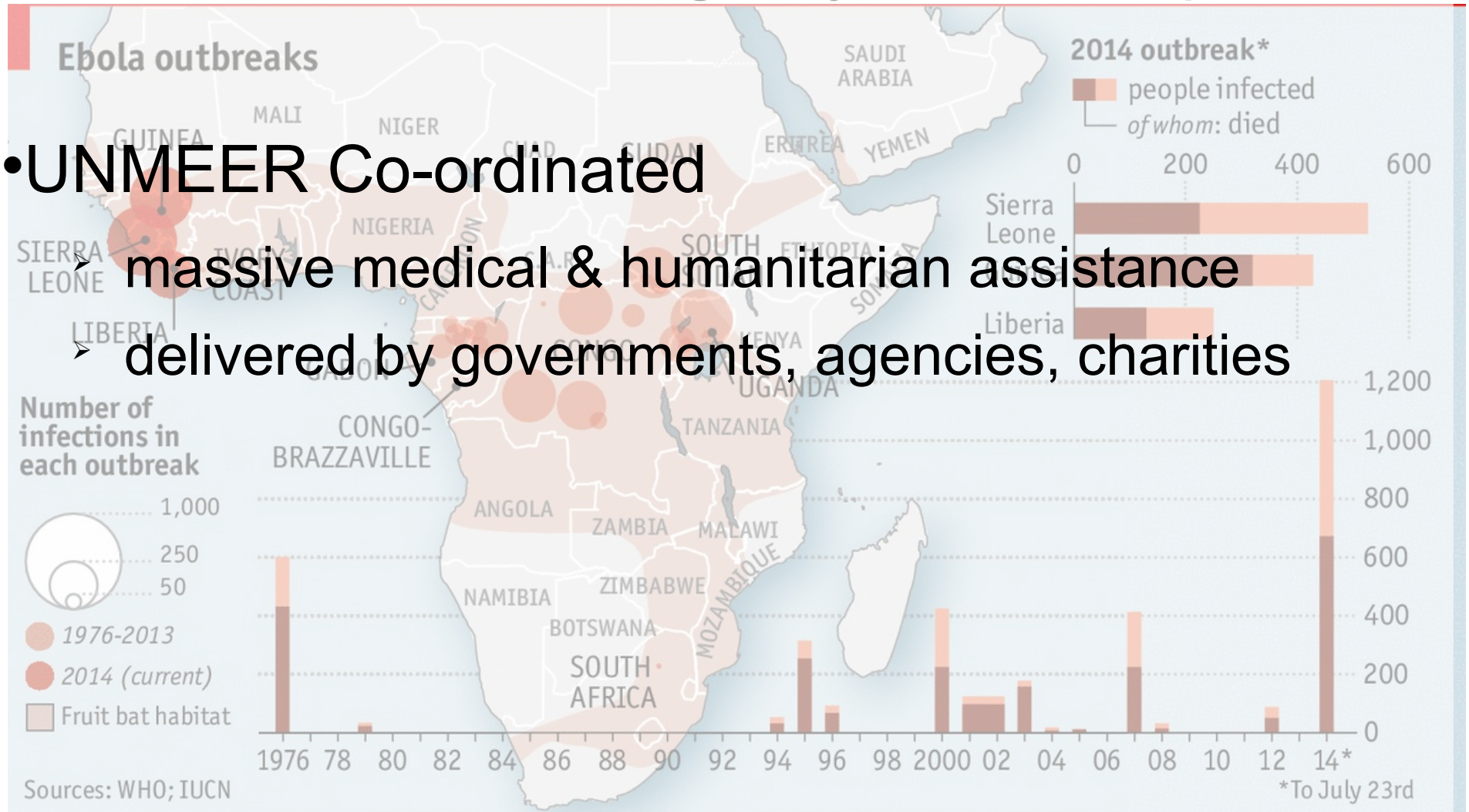




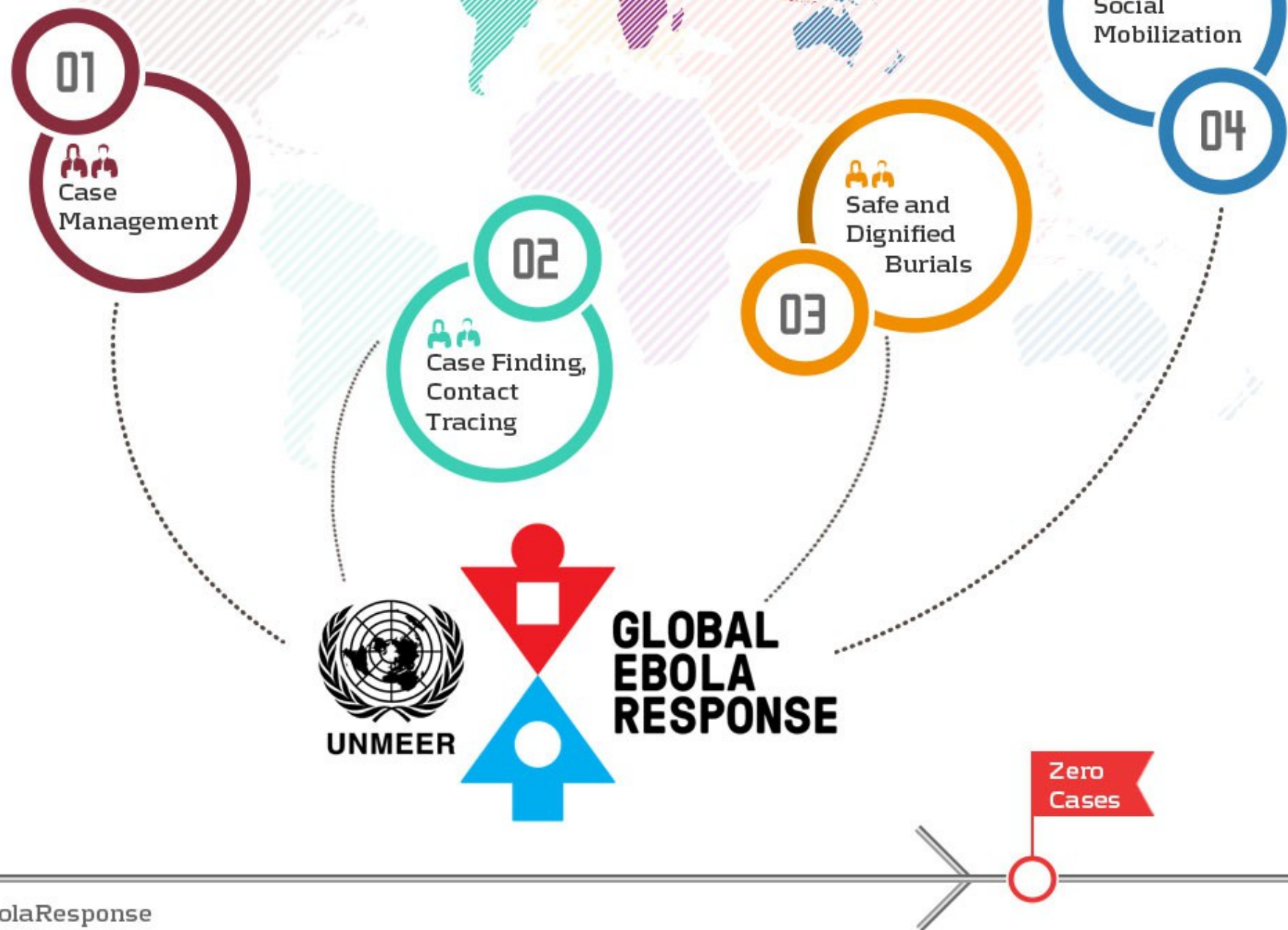
# Ebola – UNMEER Action

## UN Mission for Emergency Ebola Response

- UNMEER Co-ordinated
  - massive medical & humanitarian assistance
  - delivered by governments, agencies, charities



# How We Are Working to Stop the Ebola Outbreak





# British Army Support

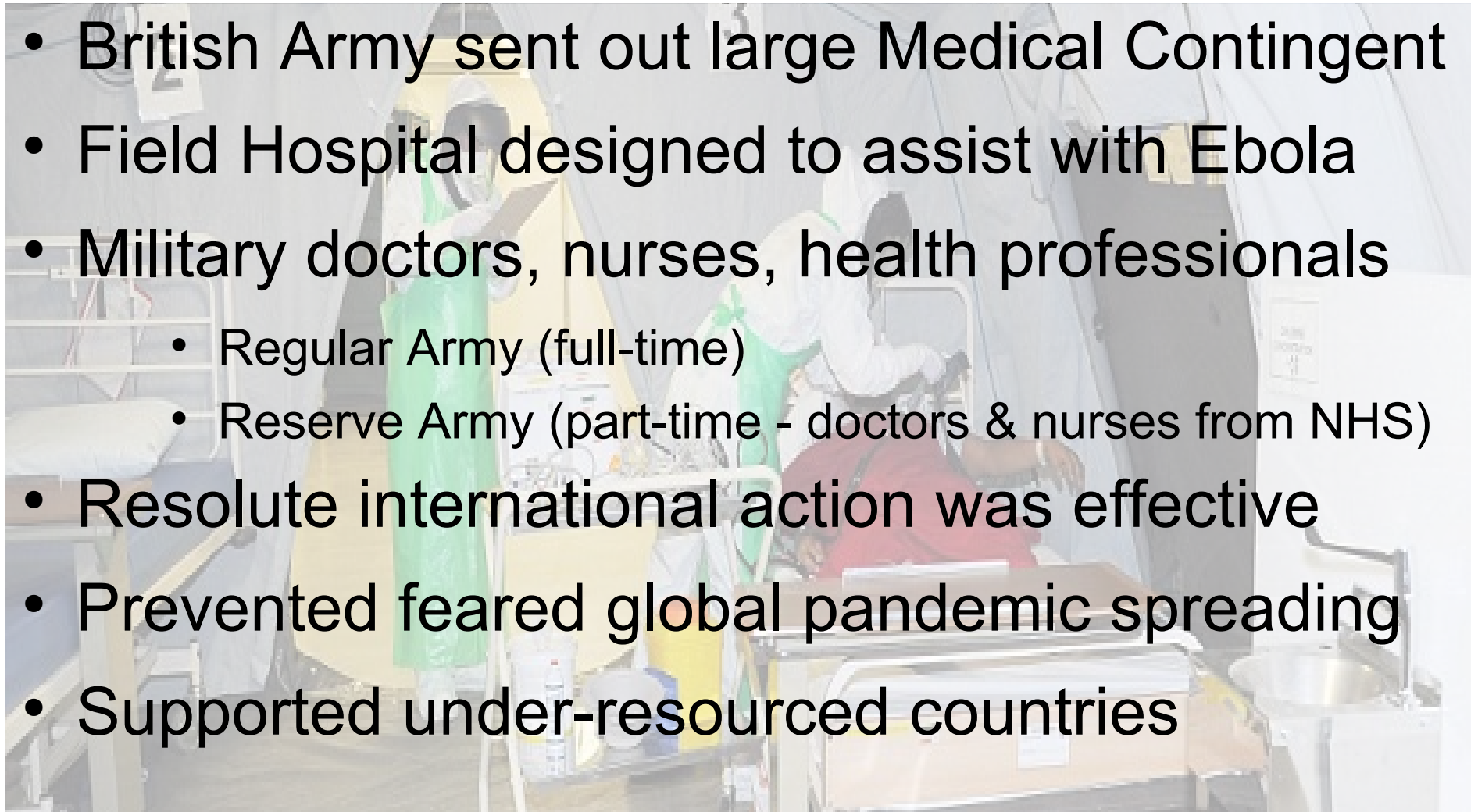
- British Army sent out large Medical Contingent
- Field Hospital designed to assist with Ebola
- Military doctors, nurses, health professionals
  - Regular Army (full-time)
  - Reserve Army (part-time - doctors, nurses from NHS)
- Resolute international action was effective
- Prevented feared global pandemic spreading
- Supported under-resourced countries



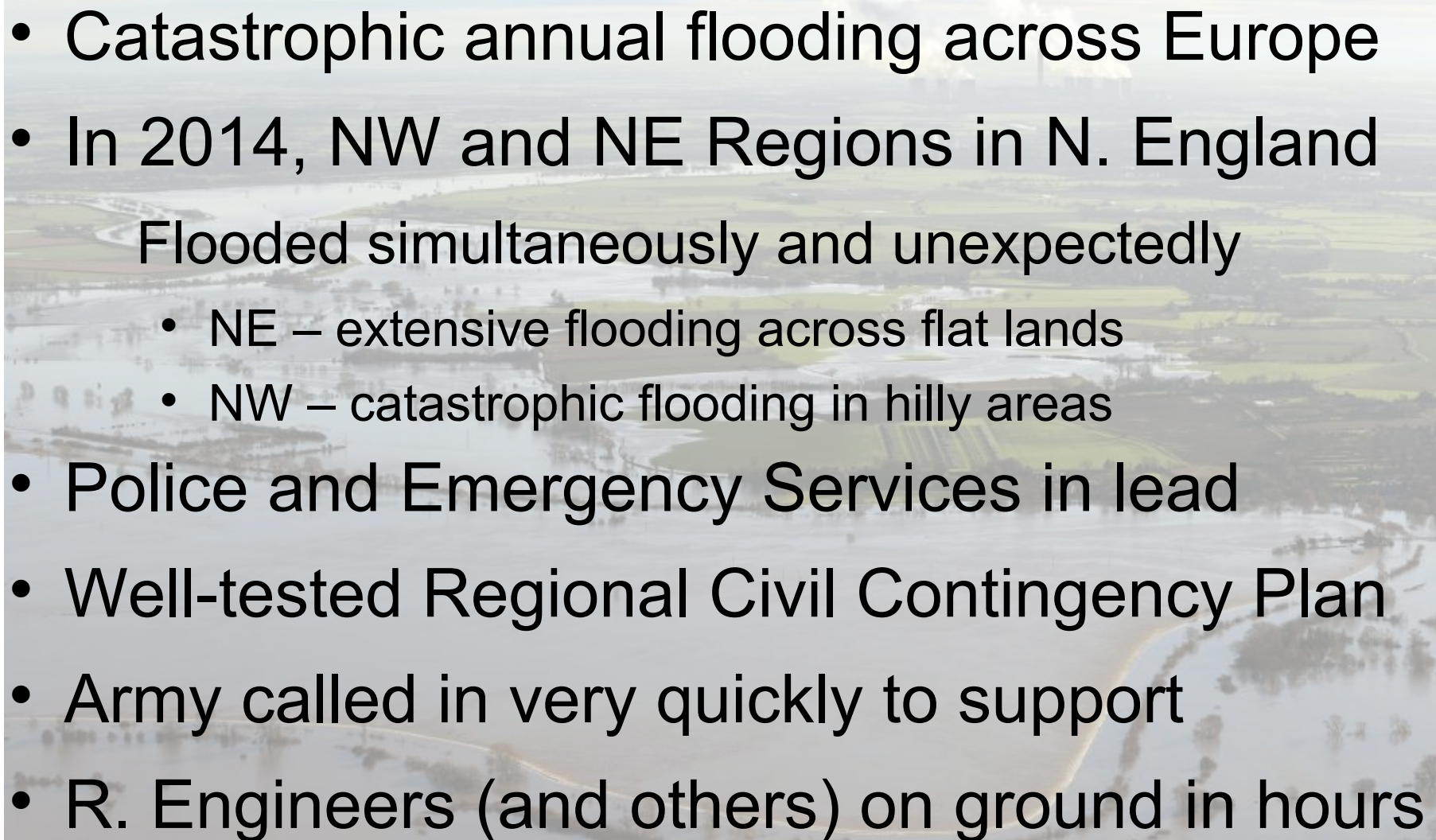


# British Army Support

- British Army sent out large Medical Contingent
- Field Hospital designed to assist with Ebola
- Military doctors, nurses, health professionals
  - Regular Army (full-time)
  - Reserve Army (part-time - doctors & nurses from NHS)
- Resolute international action was effective
- Prevented feared global pandemic spreading
- Supported under-resourced countries

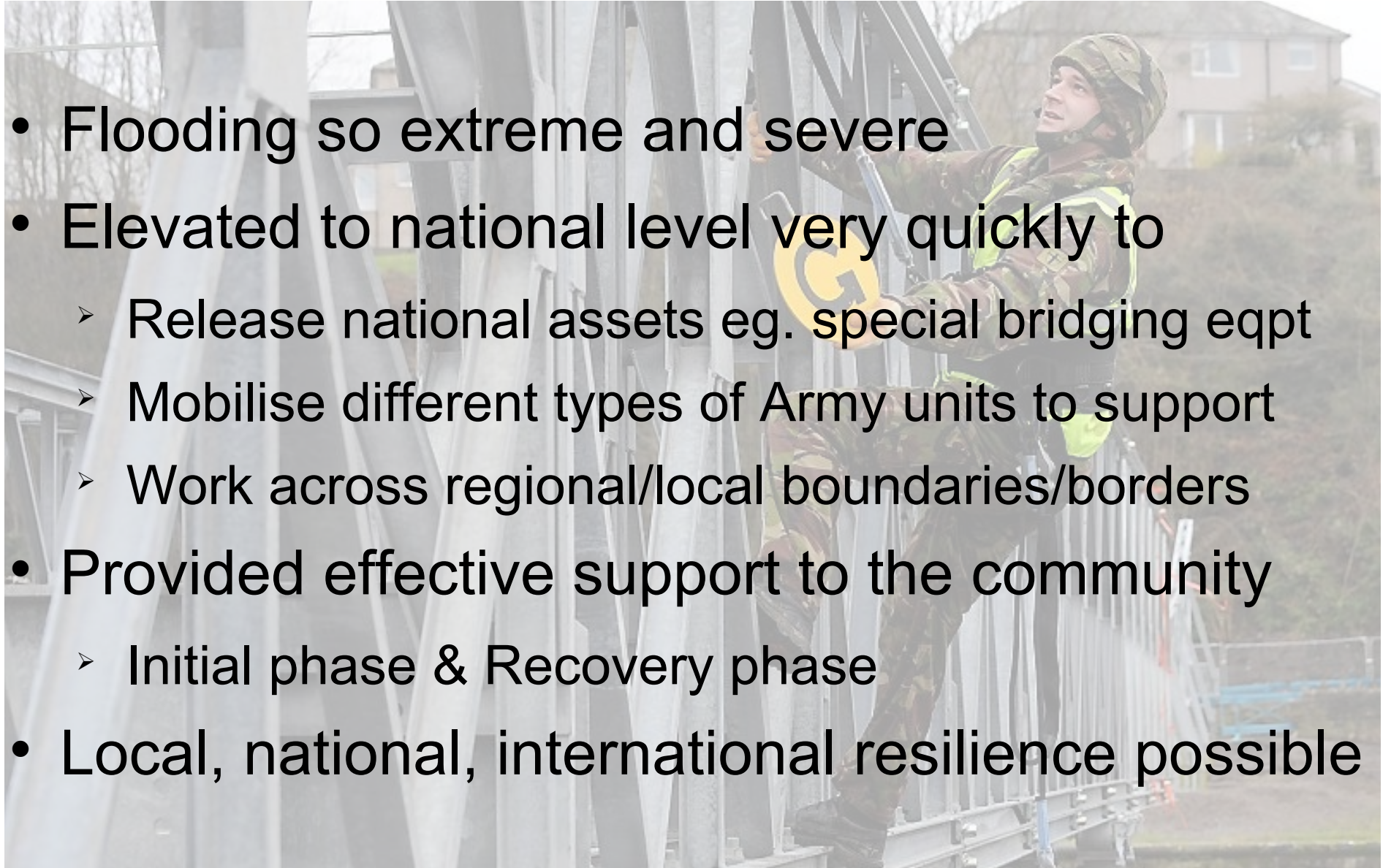


## 2. Flooding (reactive national role)

- 
- Catastrophic annual flooding across Europe
  - In 2014, NW and NE Regions in N. England  
Flooded simultaneously and unexpectedly
    - NE – extensive flooding across flat lands
    - NW – catastrophic flooding in hilly areas
  - Police and Emergency Services in lead
  - Well-tested Regional Civil Contingency Plan
  - Army called in very quickly to support
  - R. Engineers (and others) on ground in hours

# Flooding - action

- Flooding so extreme and severe
- Elevated to national level very quickly to
  - Release national assets eg. special bridging eqpt
  - Mobilise different types of Army units to support
  - Work across regional/local boundaries/borders
- Provided effective support to the community
  - Initial phase & Recovery phase
- Local, national, international resilience possible



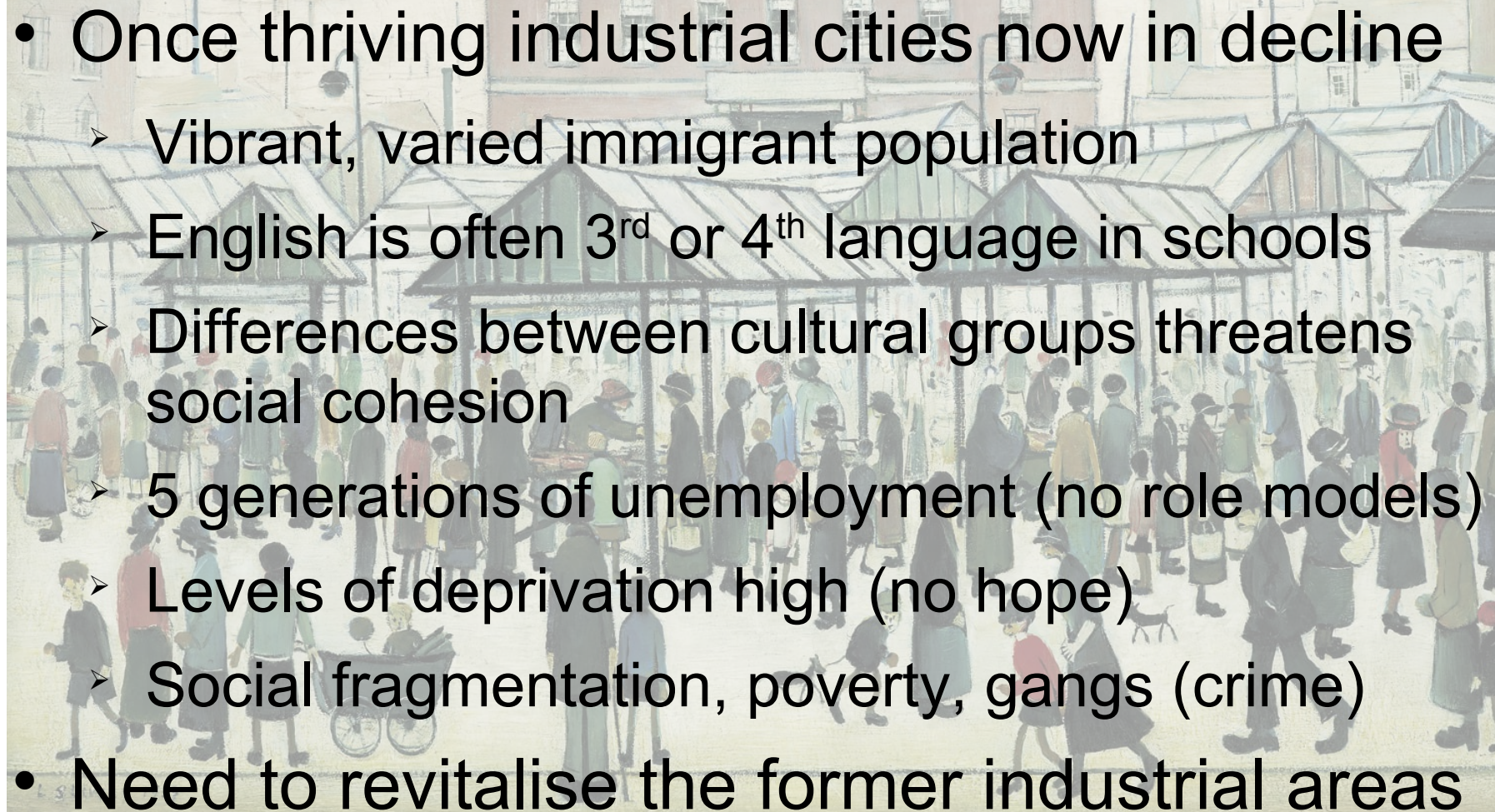


### 3. Coaching & Mentoring in Schools (innovative regional, local role)

- Thriving industrial cities now in decline

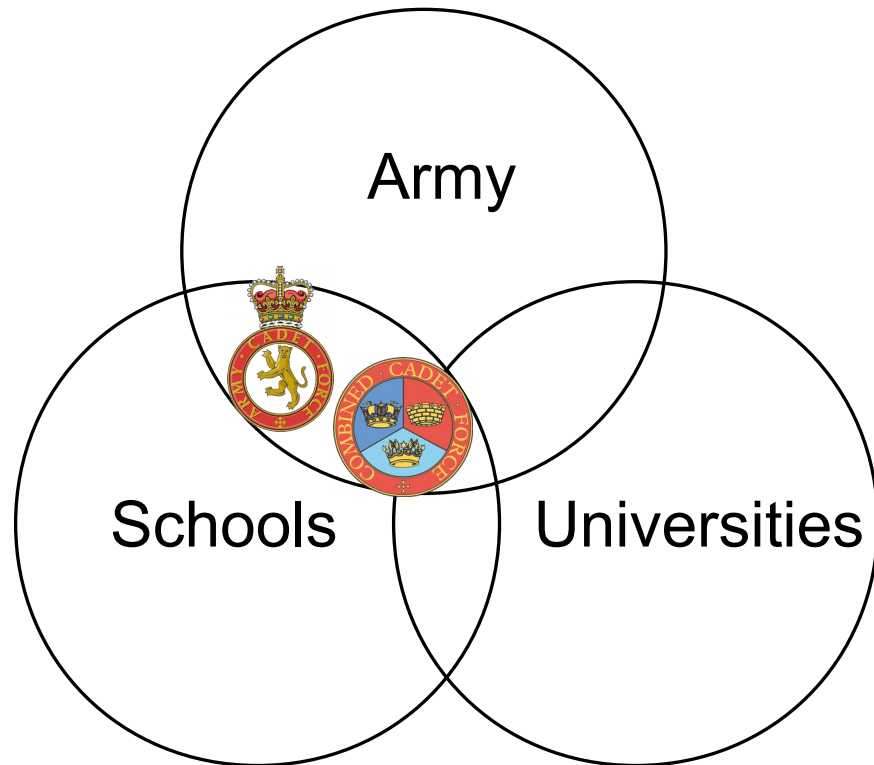


### 3. Coaching & Mentoring in Schools (innovative regional, local role)

- 
- Once thriving industrial cities now in decline
    - Vibrant, varied immigrant population
    - English is often 3<sup>rd</sup> or 4<sup>th</sup> language in schools
    - Differences between cultural groups threatens social cohesion
    - 5 generations of unemployment (no role models)
    - Levels of deprivation high (no hope)
    - Social fragmentation, poverty, gangs (crime)
  - Need to revitalise the former industrial areas

# Reachout to Schools

- Army staff support Cadet units in schools
- University students in schools as role models
- Most effective when working in partnership with other agencies
- Must be a win-win





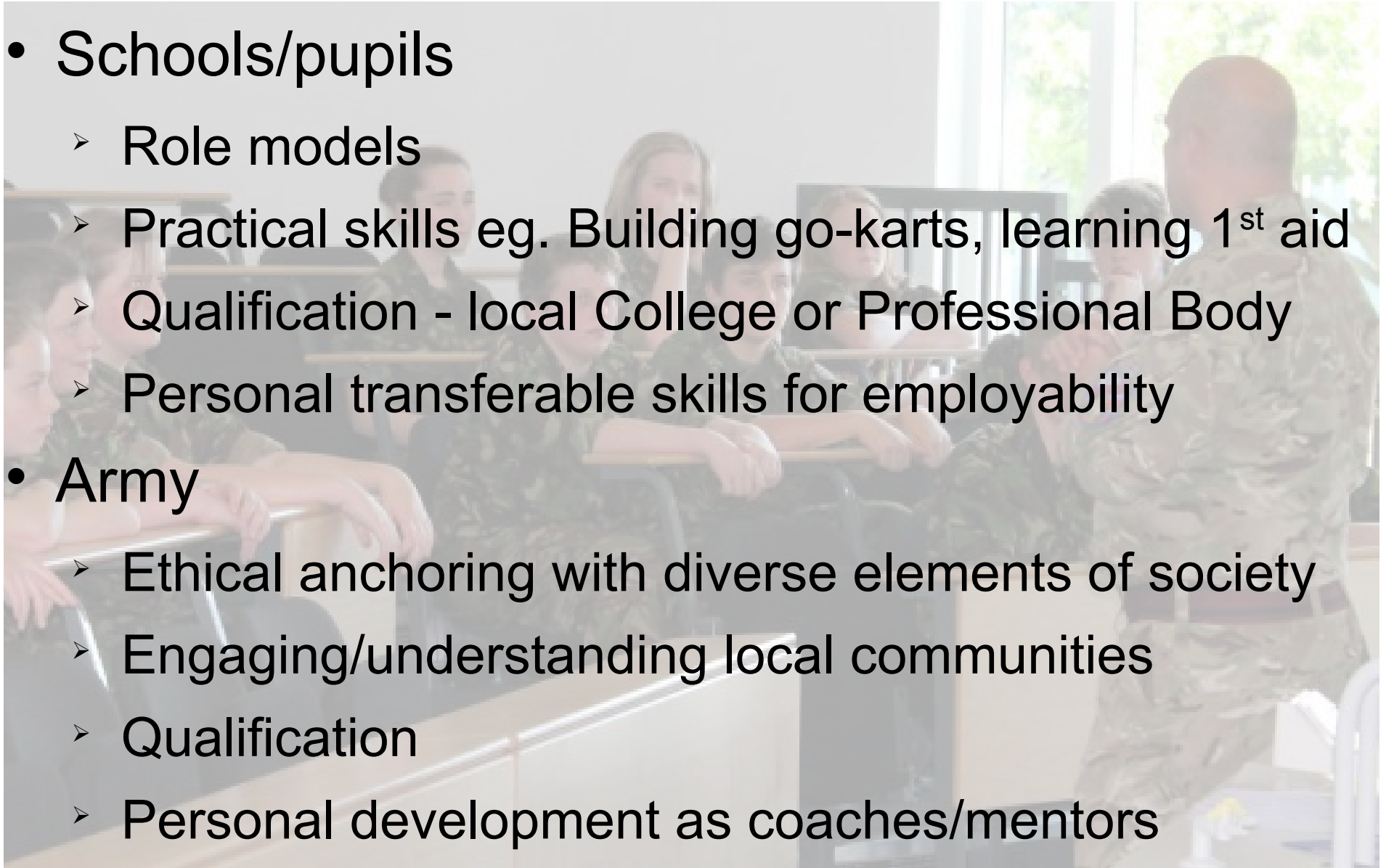
# Win-Win for stakeholders

- Schools/pupils

- Role models
- Practical skills eg. Building go-karts, learning 1<sup>st</sup> aid
- Qualification - local College or Professional Body
- Personal transferable skills for employability

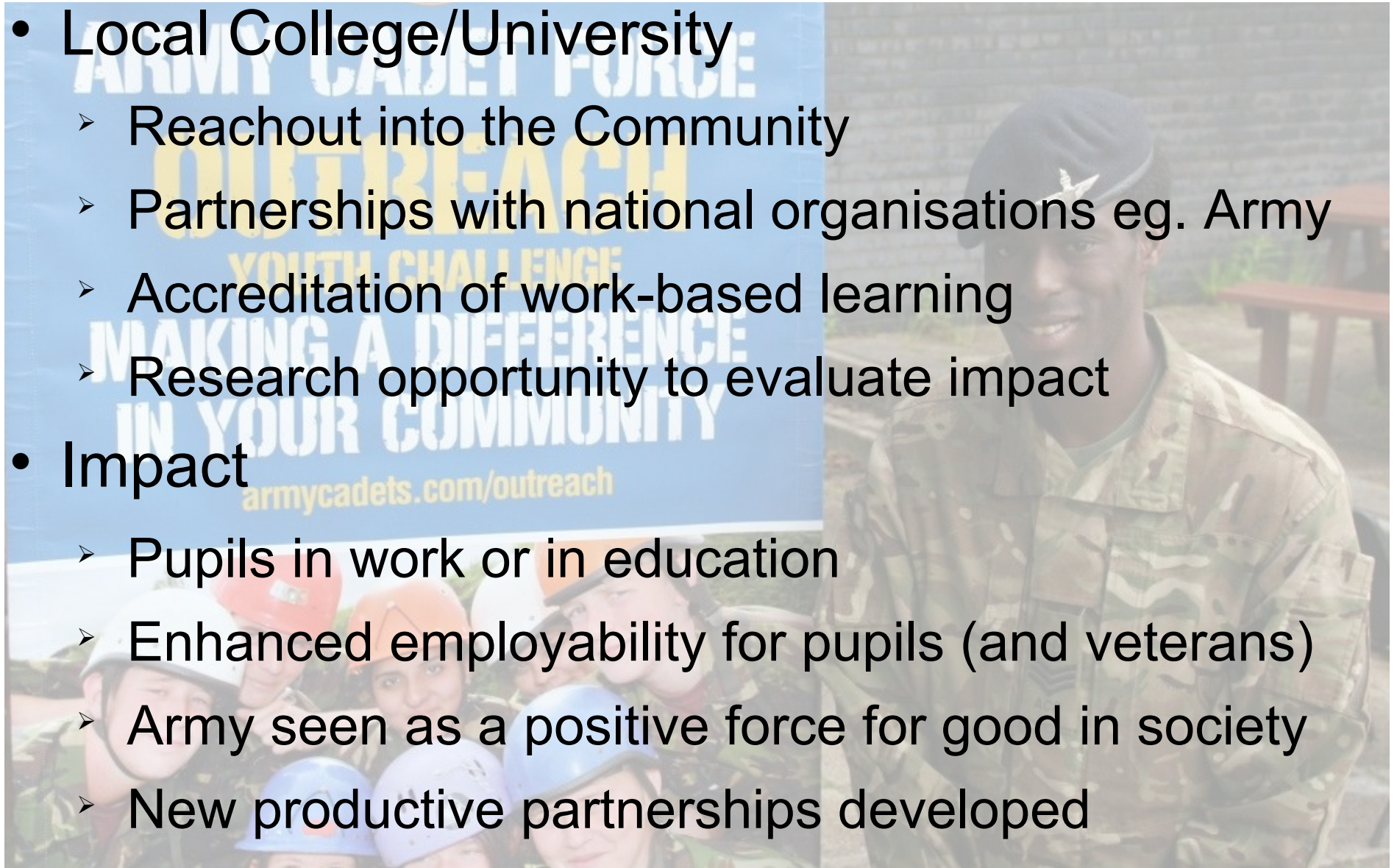
- Army

- Ethical anchoring with diverse elements of society
- Engaging/understanding local communities
- Qualification
- Personal development as coaches/mentors



# Win-Win (cont'd)

- Local College/University
  - Reachout into the Community
  - Partnerships with national organisations eg. Army
  - Accreditation of work-based learning
  - Research opportunity to evaluate impact
- Impact
  - Pupils in work or in education
  - Enhanced employability for pupils (and veterans)
  - Army seen as a positive force for good in society
  - New productive partnerships developed

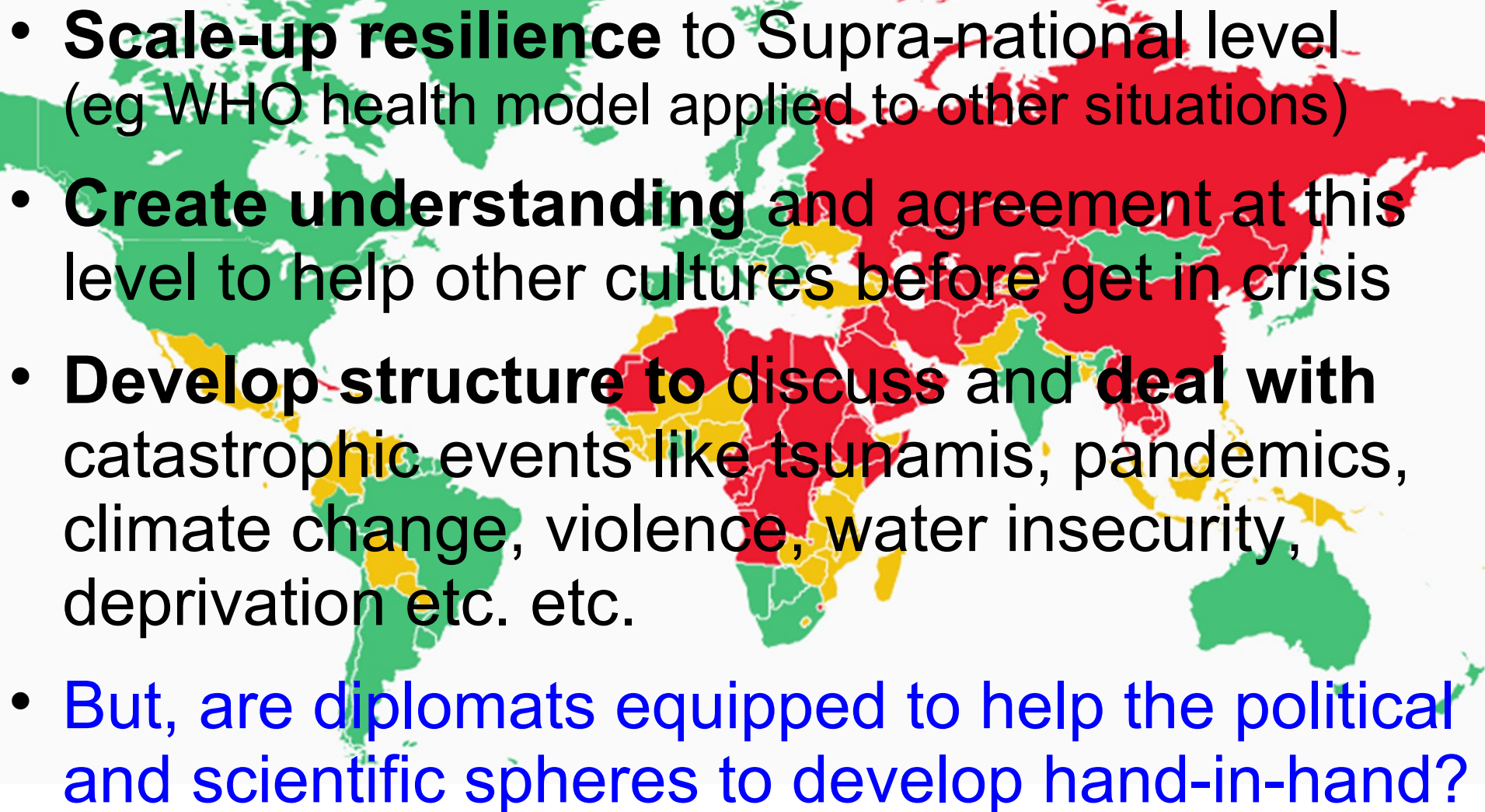


# Conclusions

- Army has a positive role in supporting society
- Civil-military relations can be scaled up
  - Local/Regional
  - National
  - International
- Need structures and planning at all levels
- Partnerships with other agencies are important
- Continuity Strategy is important for fast response and continuing support



# Look Forward

- 
- **Scale-up resilience** to Supra-national level  
(eg WHO health model applied to other situations)
  - **Create understanding** and agreement at this level to help other cultures before get in crisis
  - **Develop structure to discuss and deal with** catastrophic events like tsunamis, pandemics, climate change, violence, water insecurity, deprivation etc. etc.
  - But, are diplomats equipped to help the political and scientific spheres to develop hand-in-hand?

